



1. Join the club!
2. Get **monstrous** rewards!

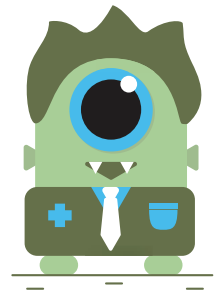
Keeler



# Thank you for your loyalty.

Here at Keeler we have created a loyalty program with exciting and exclusive rewards to say “thank you” to our amazing customers. By joining our program, you will be eligible to earn certain equipment based on reaching certain tiers (for example, Tier 1 is \$12,000 or more, Tier 2 is \$30,000 or more, etc.) on your annual purchases from our line of pharmaceuticals and clinical supplies. See more detail below.

Please see the back of this brochure for frequently asked questions. For additional questions and more information, please contact us at 800-523-5620. For the value of these products, please go to our website at [www.keelerusa.com](http://www.keelerusa.com)



## TIER 1

\$12,000

\*Choose 1 product



### PachPen

Portable, handheld pachymeter



### AccuPen

Portable, handheld tonometer



### Diagnostic Handheld Set

Professional LED Ophthalmoscope, LED Retinoscope, Transilluminator, MEM Cards, 2 lithium ion handles with batteries, 2 stand adaptors, and AA battery insert



## TIER 2

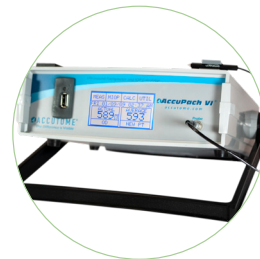
\$30,000

\*Choose 1 product



### All Pupil II

Slimline wireless binocular indirect with charger and 2 batteries



### AccuPach VI

Table-top pachymeter



### Vantage Plus

Slimline wireless binocular indirect with charger and 2 batteries



## TIER 3

\$50,000

\*Choose 1 product



### A-Scan Plus Connect\*

Rapid measurement readings



### B-Scan Plus\*

High-resolution probe



### 4Sight (your choice of)\*:

1. Unit with Connect™ software
2. Unit with A-Scan probe
3. Unit with A-Scan and Pachymeter probes



## TIER 4

\$100,000

\*Choose 1 product



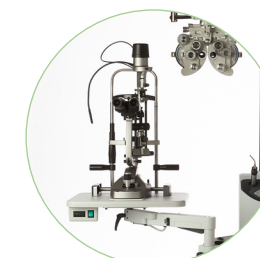
### 4Sight (your choice of)\*:

1. Unit with B-Scan probe
2. Unit with B-Scan and Pachymeter probes
3. Unit with A-Scan and B-Scan probes



### KSL-H5 Table Module\*

Slit lamp with table and power supply



### KSL-H5 Unit Module\*

Slit lamp with table, power supply, and refraction mounting post



### UBM\*

High-frequency B-probe with guard

\*Installation not included.



## Frequently Asked Questions

---

### 1. How do I check my annual purchase status and redeem rewards?

You can ask your sales representative at any time the status of your purchases. You may redeem your reward through your sales representative.

### 2. If I don't reach one of the tiers during the program dates does my balance roll over?

No, purchases and rewards are only valid during September 1, 2018 – August 31, 2019 otherwise they will expire.

## Terms and Conditions

---

- There is no additional cost to join the program, only a signed enrollment form by a practice manager is required.
- Once you reach a certain threshold you may redeem your reward. All rewards need to be redeemed between 9/1/2018 and 8/31/2019.
- Only purchases from the Keeler clinical line will apply from 9/1/2018 – 8/31/2019 toward earning the rewards.
- Shipping charges and products purchased from our diagnostic equipment line do not count toward the rewards program.
- If the equipment chosen as part of the rewards program requires an on-site installation or training there will be an additional fee.
- All remaining points at 8/31/2019 will expire and the program will start again.
- Keeler reserves the right to modify or cancel the program at any time.
- Products must be invoiced before 8/31/2019.

**Keeler Instruments Inc.**  
3222 Phoenixville Pike  
Building 50, Malvern  
PA 19355 USA  
**Toll Free: 1 800 523 5620**  
**Tel: 610 353 4350**  
**Fax: 610 353 7814**  
**Email: [keeler@keelerusa.com](mailto:keeler@keelerusa.com)**  
**Website: [www.keelerusa.com](http://www.keelerusa.com)**

**Keeler**